



INSTRUCTION BULLETIN

No. 3591
Machines: 800, 810
Published: 9-02
Rev. 01

NOTE: DO NOT discard Parts List from Instruction Bulletin. Place Parts List in the appropriate place in your machine manual for future reference. Retaining the Parts List will make it easier to reorder individual parts and will save you the cost of ordering an entire kit.

NOTE: Numbers in parenthesis () are reference numbers for parts listed in Bill of Materials.

Installation Instructions for Basic Cab Kit 77735.

This kit contains parts needed to install a cab assembly on the machines listed above. Please follow step-by-step instructions.

PREPARATION:

(Refer to Figures 1 and 2)

FOR SAFETY: Before leaving or servicing machine, stop on level surface and set parking brake (if equipped on machine). Then turn off machine and remove key.

1. Disconnect battery cables from machine.



WARNING: Always disconnect battery cables from machine before working on electrical components.

2. Remove existing armrest from right side of seat and slightly bend seat adjustment lever up.
3. Remove existing floor mat from operator's compartment and discard.
4. Remove existing fuel inlet panel from operator's compartment.
5. Move seat forward on seat support.
6. Drill one 9/32 inch diameter hole in operator's compartment back panel. Refer to FIG. 1 for hole location.

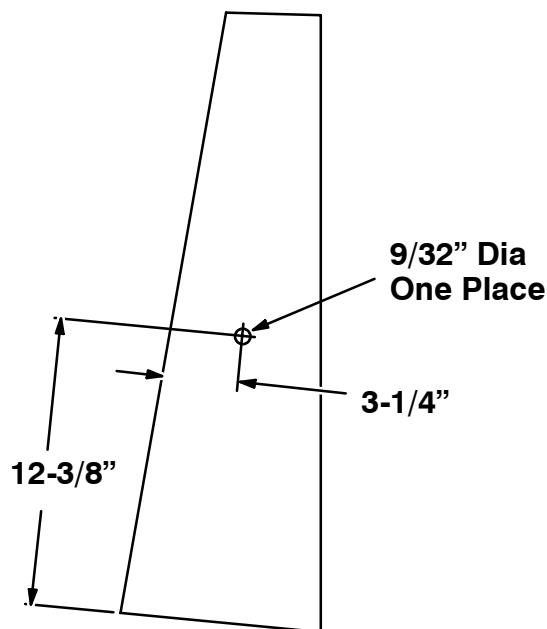


FIG. 1 – Operator Compartment Back Panel Bumper Hole Location

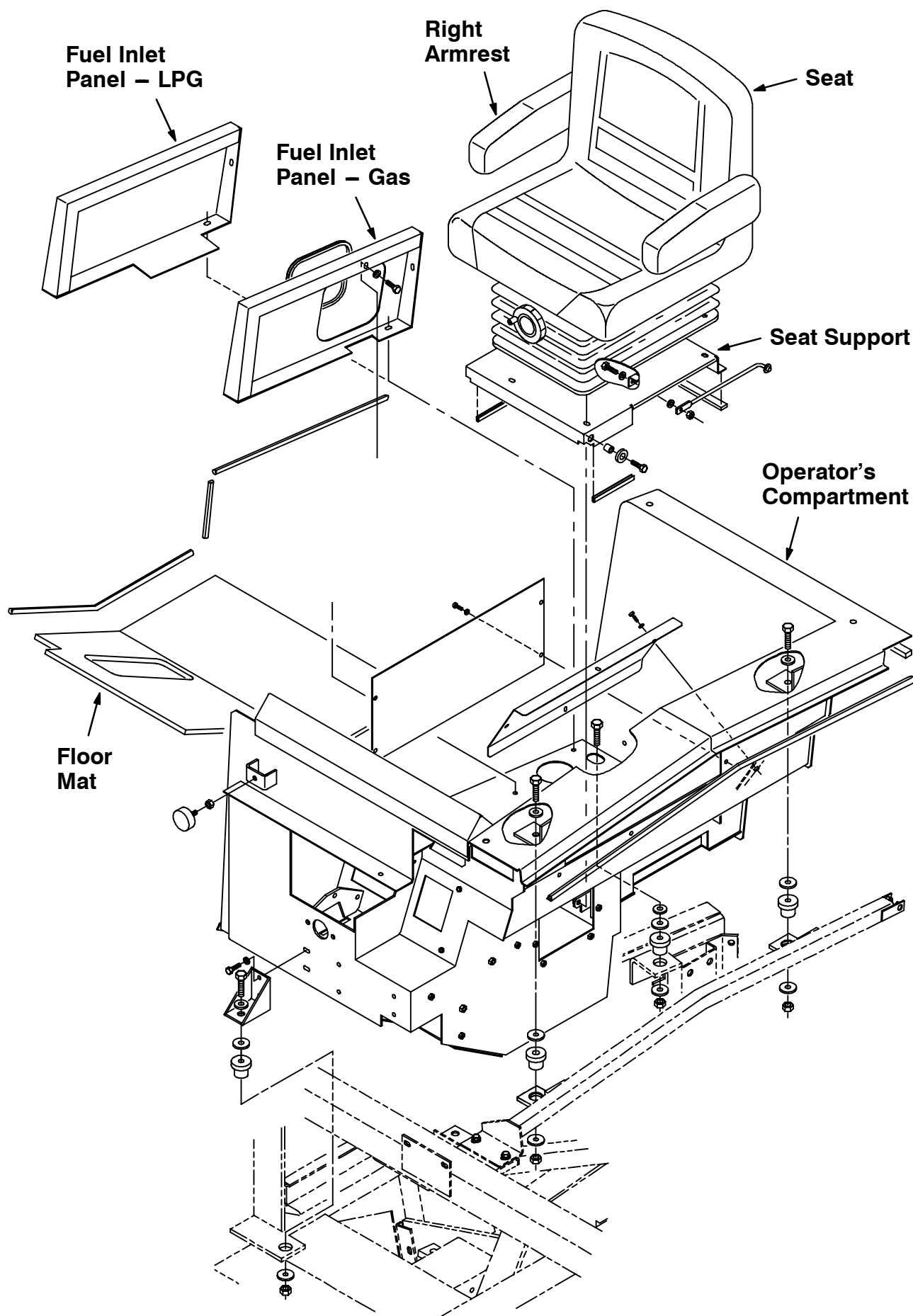


FIG. 2 – Existing Operator's Compartment

07730/07731

INSTALLATION:

(Refer to Figures 1, 3, 4, 5 and 6)

1. Remove existing plug button from CB8 on circuit breaker plate. Then install circuit breaker (3) and circuit breaker boot (4) on electrical panel, in position CB8.

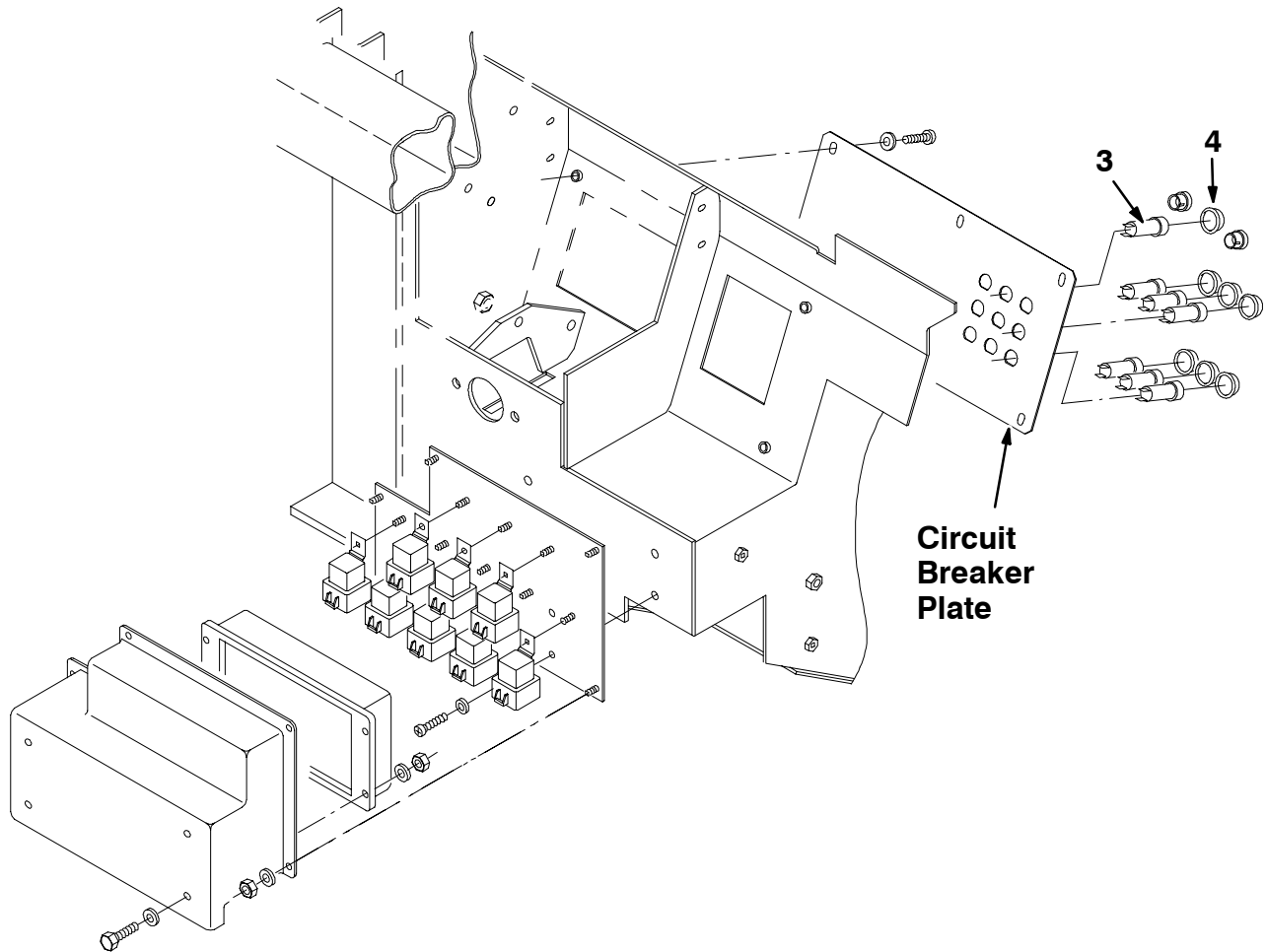


FIG. 3 – Circuit Breaker Location

07735

2. Hoist cab assembly (1) up with a two by four placed through side window and door opening. Attach hoist chains to two by four.

IMPORTANT: Clean bottom surfaces of cab assembly (1) with isopropyl alcohol before applying seal.

3. Install mounting seal (5) on bottom surfaces of cab assembly (1).

NOTE: Offset seal 1/4 inch from outside edge of cab.

4. Cut excess mounting seal (5) from machine and apply to machine frame where gaps may occur.
5. Hoist cab assembly (1) into position over machine and door opening. Then lower cab assembly onto machine frame.
6. Install cab assembly (1) on machine frame with four sockethead screws (9), four flat washers (10), two pan screws (12) and two hexlocknylon nuts (13).
7. Install fuel inlet cover (17) in operator's compartment with two hex screws (18), two flat washers (11), one hex screw (14) and one flat washer (15).

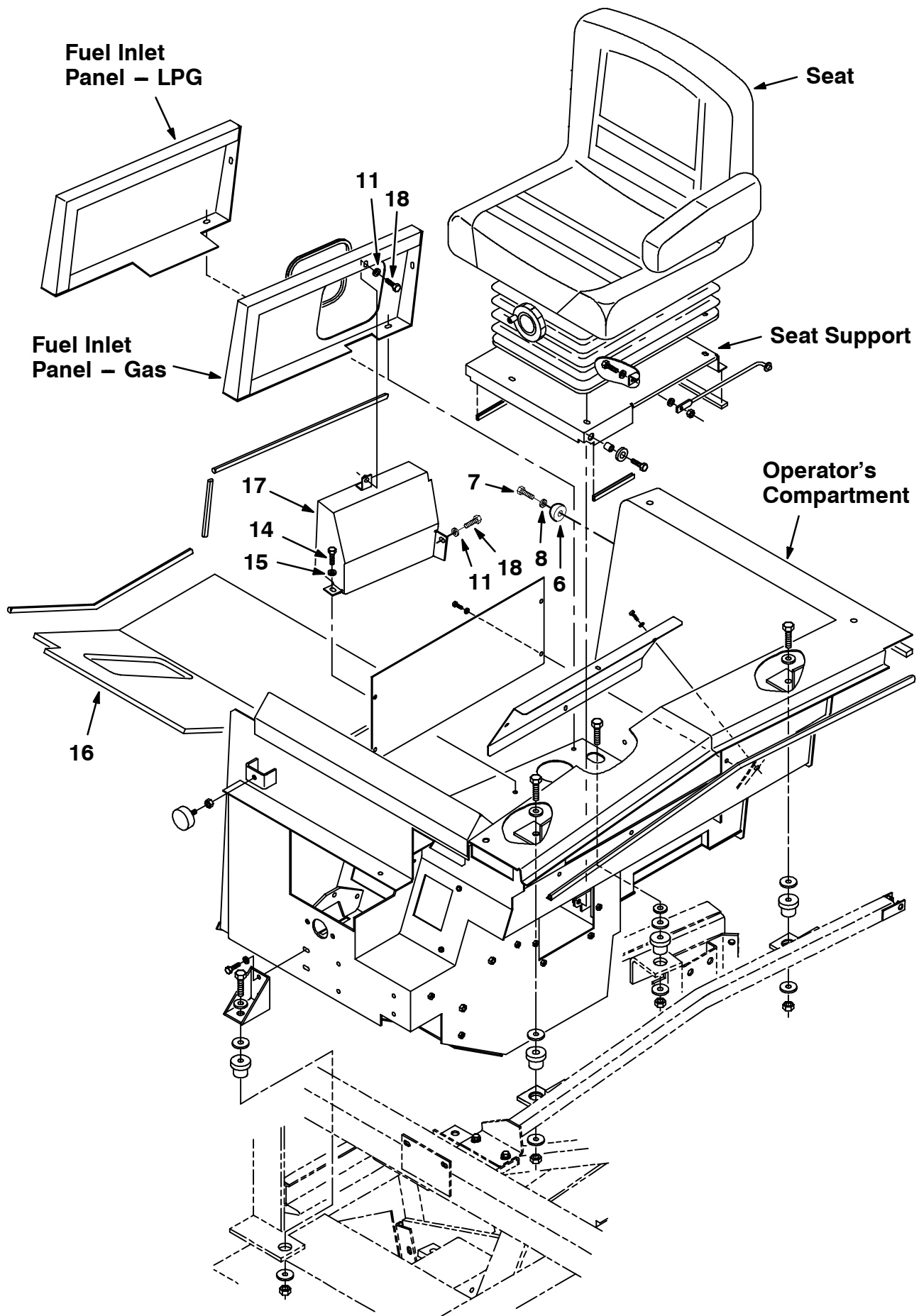


FIG. 4 – Existing Operator's Compartment

07730/07731

8. Install existing fuel inlet panel in operator's compartment with existing hardware.

9. Install floor mat (16) on floor of operator's compartment.

10. Install lower side insulation (19) on left side of operator's compartment.

NOTE: Use floor mat (16) on floor of operator's compartment to determine distance between lower side insulation and floor.

11. Install upper side insulation (20) on left side of operator's compartment.

12. Install front insulation (21) on front of operator's compartment around steering column.

13. Install rubber bumper (6) in hole in operator's compartment with pan screw (7) and lock washers (8).

14. Connect cab jumper wire harness (2) between cab wire harness from cab assembly (1) and main wire harness on machine.

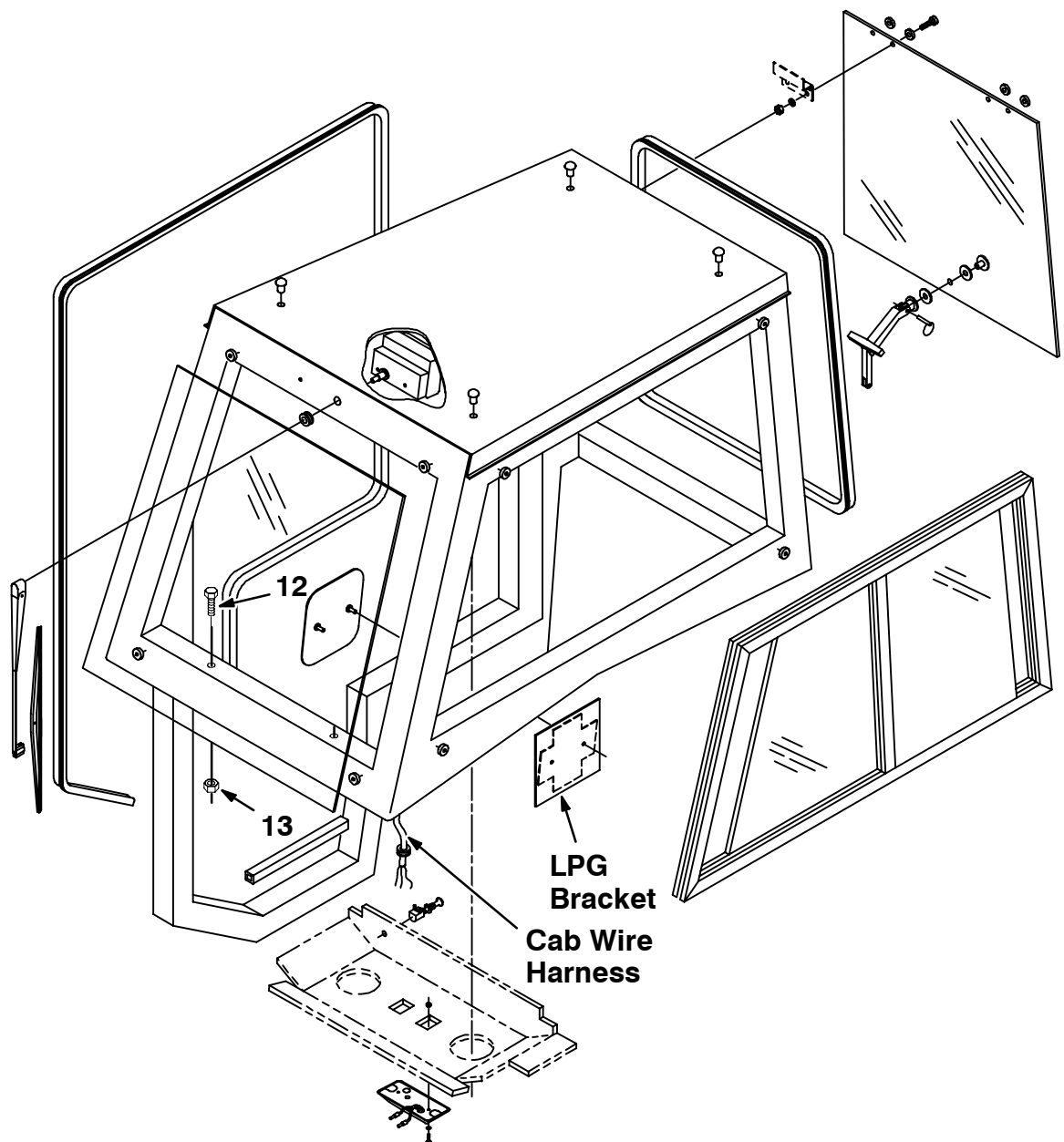


FIG. 5 – Cab Assembly and Window Assembly

08782

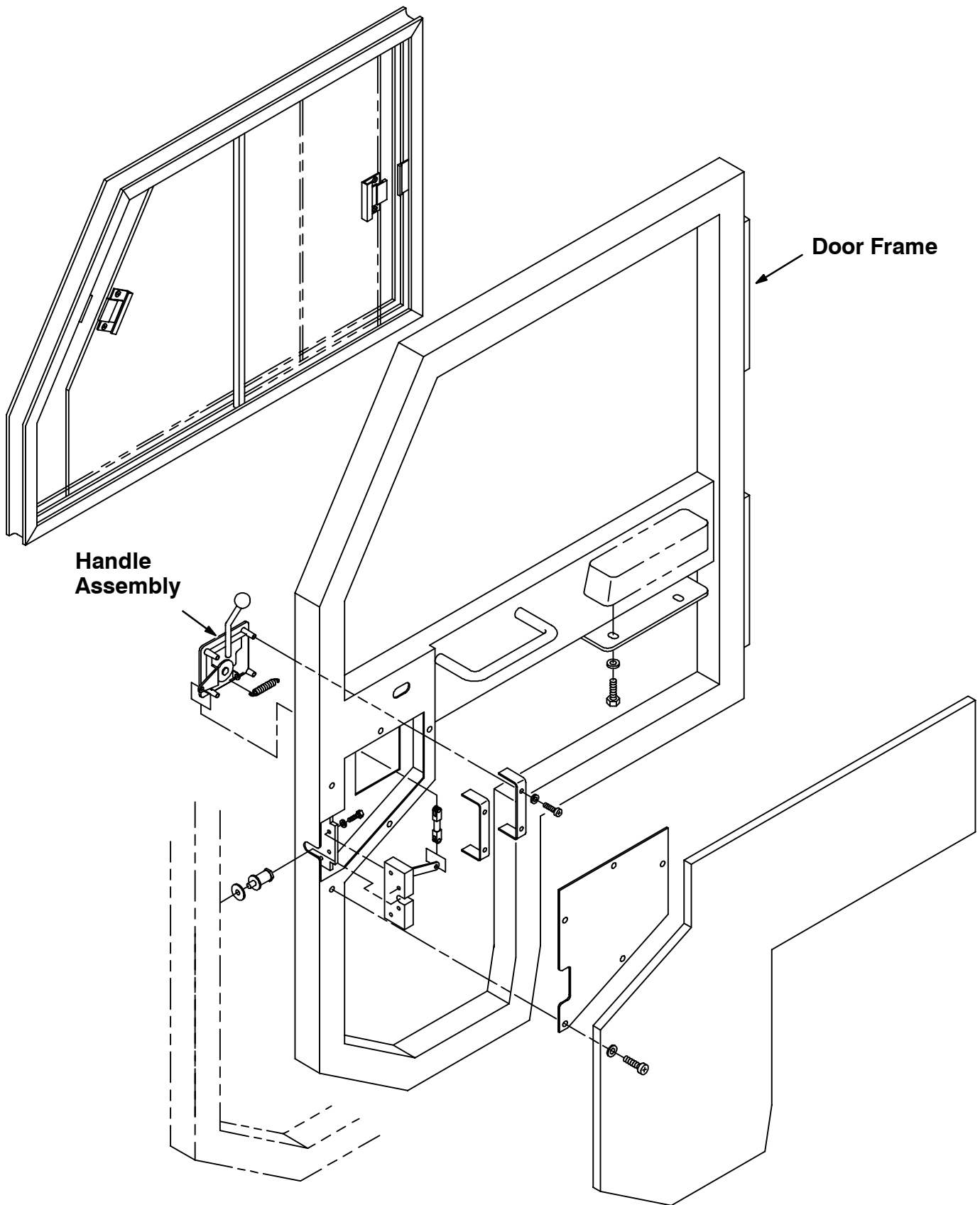


FIG. 6 – Cab Door Assembly

08784

BILL OF MATERIALS FOR BASIC CAB KIT 77735

Ref.	TENNANT Part No.	Description	Qty.
1	63615	Cab assembly	1
2	74057	Cab jumper wire harness	1
3	57803	Resetable circuit breaker, 15 amp	1
4	57751	Circuit breaker boot	1
5	73896	Cab mounting seal, 205.0" Lg	1
6	44851	Rubber bumper	1
7	09258	Pan screw, M6 x 1.0 40	1
8	32980	Internal lock washer, 10	1
9	39309	Sockethead screw, M10 x 1.5 25	4
10	32485	Flat washer, 3/8" SAE	4
11	32491	Flat washer, 5/16" Hard	2
12	09737	Pan screw, M8 x 1.25 20	2
13	08709	Hexlocknylon nut, M8 x 1.25	2
14	87308	Hex screw, M6 x 1.0 12	1
15	32490	Flat washer, 1/4" Hard	1
16	76522	Rubber floor mat tread	1
17	70620	Fuel inlet cover	1
18	16931	Hex screw, M8 x 1.25 20	2
19	77652	Styrofoam insulation, lower side	1
20	76515	Styrofoam insulation, upper side	1
21	76516	Styrofoam insulation, front	1

TENNANT COMPANY
P. O. Box 1452
Minneapolis, MN 55440-1452